

Operator:  
CHAIYAN

Ligman Lighting Co.,Ltd.  
2912 Ladprao road, Klongjun,Bangkapi Bangkok  
10240,

+66 2 7339140  
+66 2 7339154  
info@ligman.com

Date:  
9/8/2017



HK17090055\_Seawall Sculpture at Harcourt Garden\_Rev1

#### DISCLAIMER


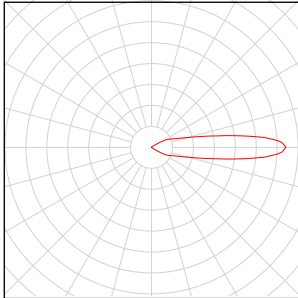
Calculations have been performed according to IES and IEC standard and good practice. Some differences between measured values and calculated values may occur due to tolerances in calculation parameters, testing procedures, component performance, measurement techniques and field conditions such as voltage and temperature variations. Input data used to generate the attached calculations such as room dimensions, reflectance's, furniture and architectural elements significantly affect the lighting calculations. If the real environment conditions do not match the input data, differences will occur between measured and calculated values.

## Table of contents

HK17090055\_Seawall Sculpture at Harcourt Garden\_Rev1

Luminaire parts list.....	3
Views.....	4
Site 1	
Calculation Stone laying / Perpendicular illuminance.....	8

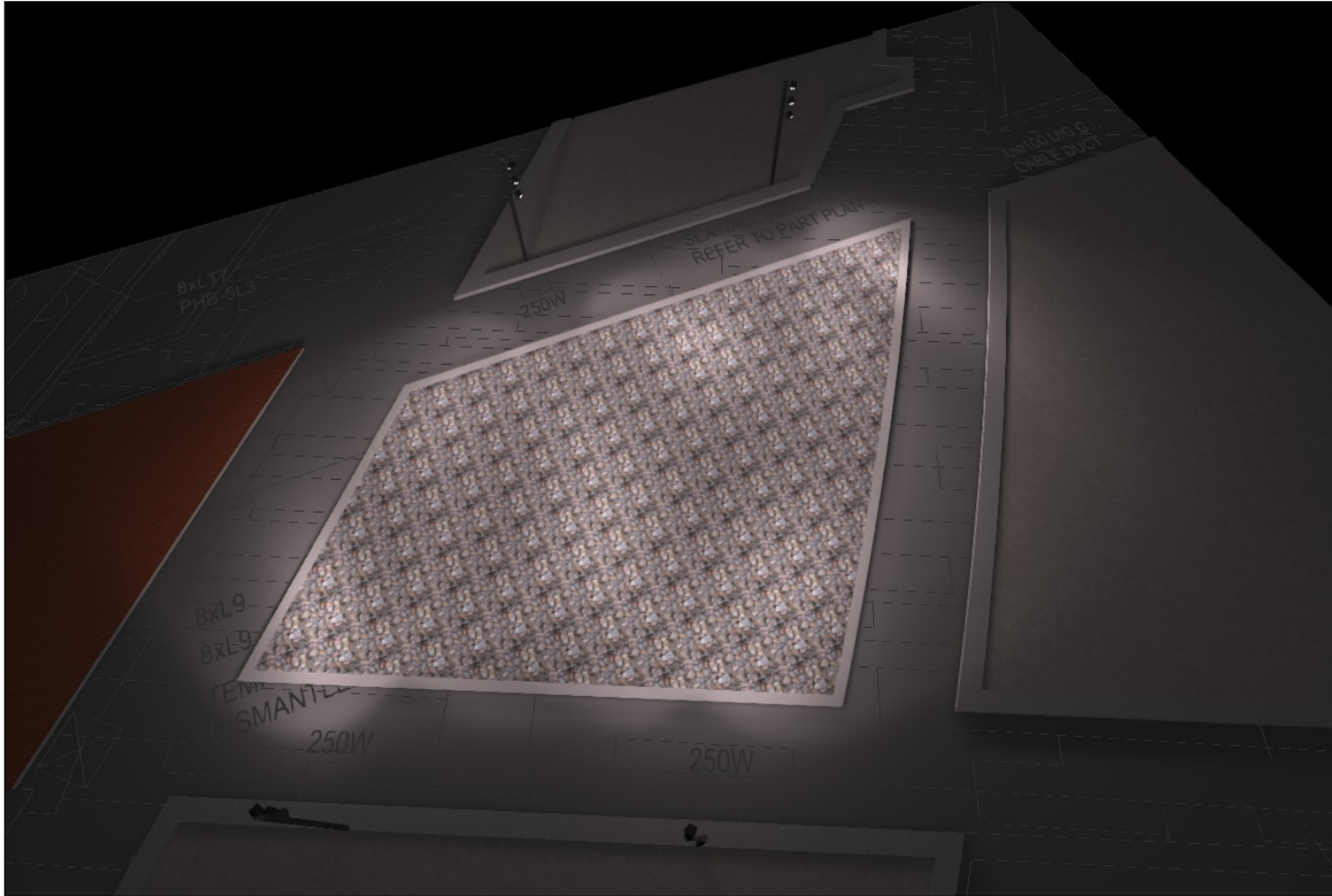
## HK17090055\_Seawall Sculpture at Harcourt Garden\_Rev1

Quantity	Luminaire (Luminous emittance)		
4	Ligman Lighting Co.,Ltd. - JE-20011-M-W40 Jet Cluster column projectors LED Light emission 1, 2 and 3 Fitting: 1xJE-20011-M-W40 Absolute photometry Luminaire luminous flux: 3091 lm Power: 39.0 W Luminous efficacy: 79.3 lm/W  Colourimetric data 1xJE-20011-M-W40: CCT 3783 K, CRI 84		

Total lamp luminous flux: 37092 lm, Total luminaire luminous flux: 37092 lm, Total Load: 468.0 W, Luminous efficacy: 79.3 lm/W

## HK17090055\_Seawall Sculpture at Harcourt Garden\_Rev1

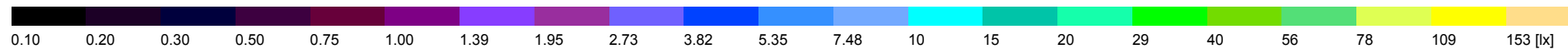
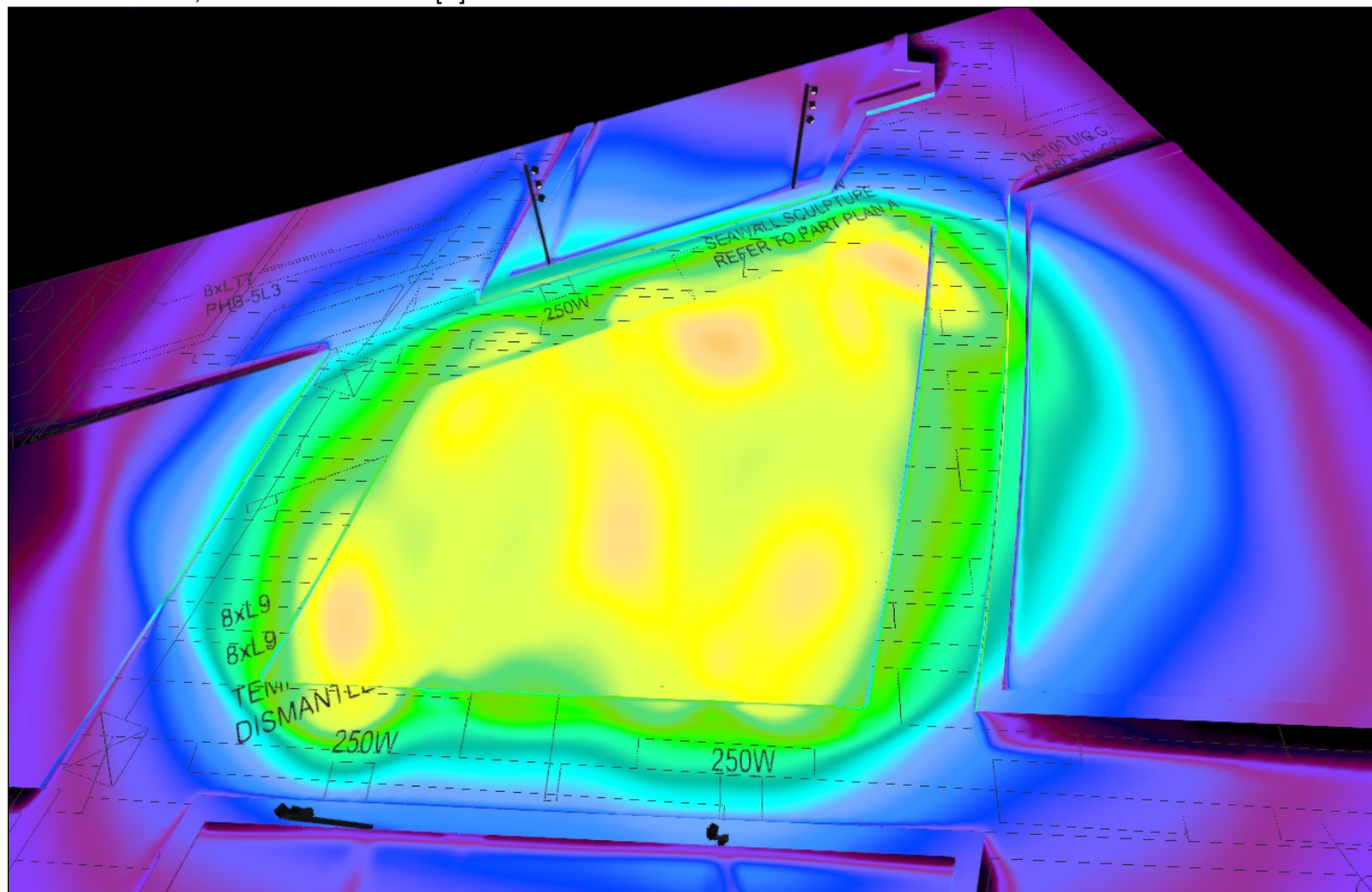
### 3D Render 01



3D Render 02

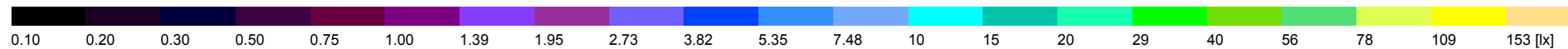
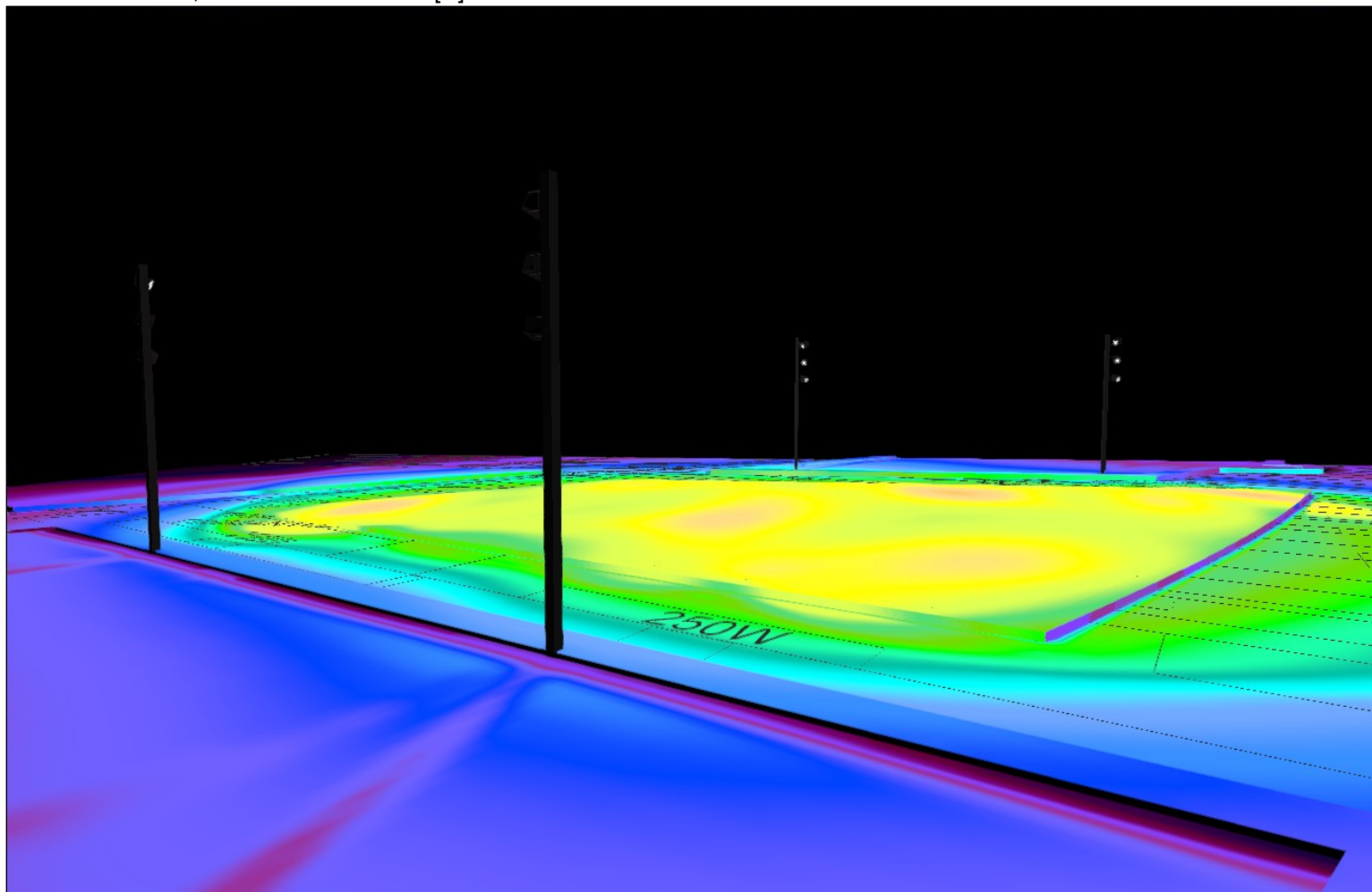


3D False color 01, Illuminance values in [lx]

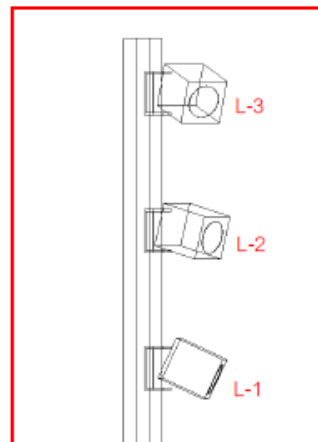
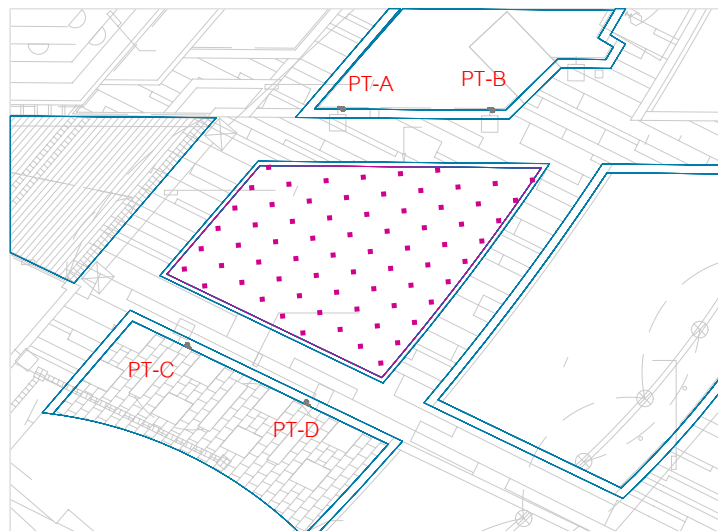




3D False color 02, Illuminance values in [lx]



### Calculation Stone laying / Perpendicular illuminance



Maintenance factor: 0.80

Calculation Stone laying: Perpendicular illuminance (Grid)

Light scene: Light scene 1

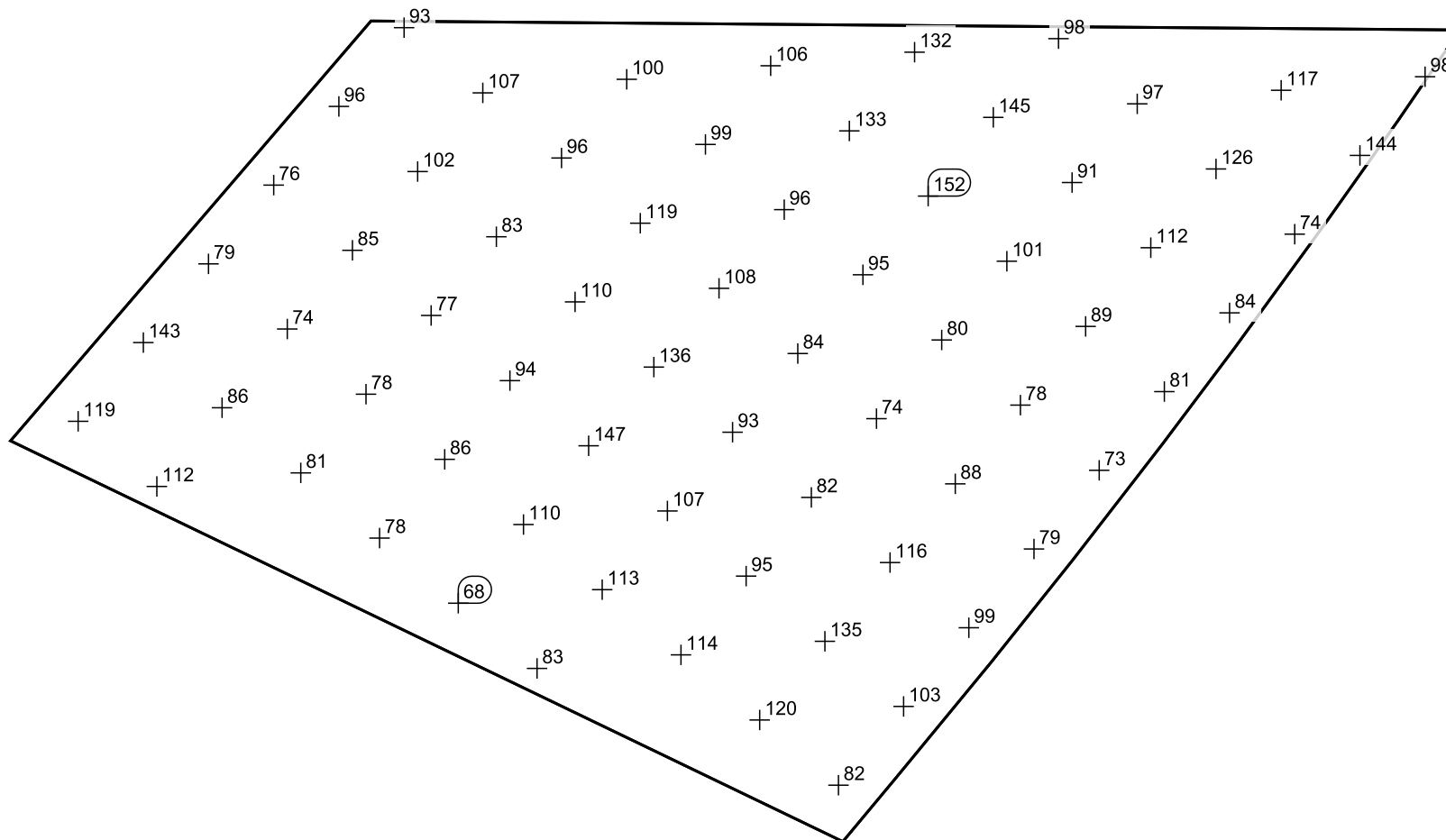
Average: 100 lx, Min: 67.7 lx, Max: 152 lx, Min/average: 0.68, Min/max: 0.45

Height: 0.100 m

PT-A	Tilt / Rotation	PT-B	Tilt / Rotation
L-1	20° / 35°	L-1	25° / 20°
L-2	20° / 5°	L-2	23° / 10°
L-3	27° / 45°	L-3	25° / 45°
PT-C	Tilt / Rotation	PT-D	Tilt / Rotation
L-1	25° / 20°	L-1	20° / 20°
L-2	15° / 10°	L-2	20° / 15°
L-3	20° / 35°	L-3	25° / 25°



Value grid [lx]



Scale: 1 : 100